

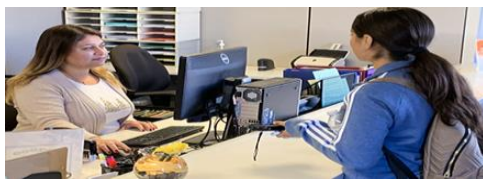
Untapped Populations That Increase College Enrollment And Retention

Melissa Recknor, Surry Community College
Hannah Scott, Mitchell Community College
Nicole Worley, Sandhills Community College

Tuesday, November 17, 2020

#N3CSDPA





Introductions



Melissa D. Recknor
*Director of Advising and
Student Success*
Surry Community College

Hannah Scott
Title

Mitchell Community College



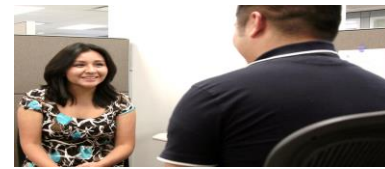
Nicole Worley
*Director of College and
Career Readiness*
Sandhills Community
College



Are There Untapped Populations on our Campuses?

- College and Career Readiness (CCR) students
 - High School Equivalency and Adult High School
 - English Language Acquisition
- Continuing Education career training students
 - Allied Health
 - Construction
 - Advanced Manufacturing





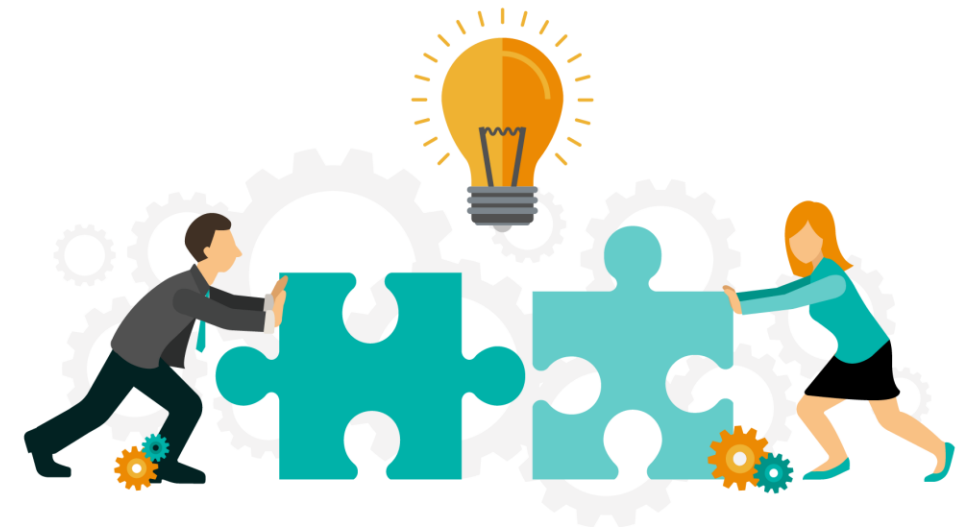
Internal Partnerships: Increased Enrollment, Student Success

- CCR is not just about “getting a GED!” Federal funding regulations require so much more:
 - Co-enrollment and Integrated Education and Training (IET) programs [single learning objectives, CCR class must support student success in career training]
 - Post-secondary enrollment (part of performance funding)
 - Attainment of a post-secondary credential (after-exit measures)
 - Employment (after-exit measure)
- More than two-thirds of today’s jobs require more than high school diploma
- CCR students need to feel that they belong and are included on our campuses



Being Intentional about Breaking Down Silos

- Recruiter visits to classes/orientation, tours
- College program fair, open houses (Virtual programs fair at SCC)
- Integrated campus community (what could this look like?)
- Build relationships, seek opportunities to partner across divisions (Transition courses for CU , CCR support classes EMT and BLET-- IET)

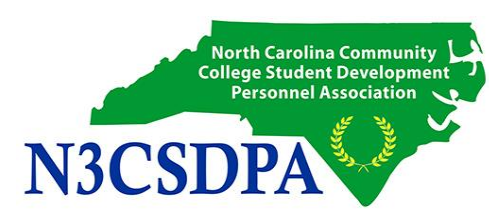




Continuing Education to Curriculum Crosswalks



- Advanced Manufacturing to Industrial Technology
- Firefighter Training to Fire Science
- Trades to Construction Management



Questions and Discussion

Melissa D. Recknor /

Hannah Scott /

Nicole Worley / worleyn@sandhills.edu

**Thank you for joining us
today!**

#N3CSDPA

